

METAL FINISHES

Product Description



FOSHAN HINOX

Discover how surface finishes can redefine the look and feel of a space. From the fluid elegance of Water Ripple sheets to the bold impressions of embossed textures, and the timeless charm of antique or brushed metal – every finish tells a story.

This catalog showcases Foshan Hinox's wide range of stainless steel finishes designed to inspire architects, designers, and visionaries alike. Whether you're working on striking façades, luxurious interiors, or standout features, our finishes combine durability with design innovation.

Elevate your next project with Foshan Hinox.

Applicable On:

Stainless Steel

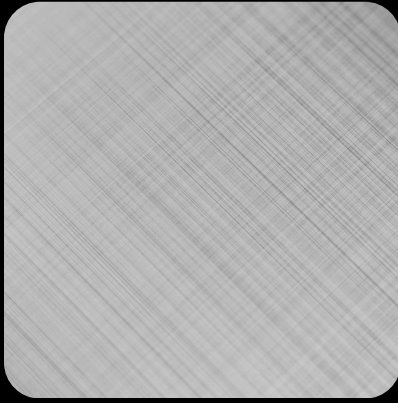
Available in all PVD and Antique Colors

Note:

- For more details please contact our team

Finishes

Plaid



A Plaid Metal Surface Finish features a distinctive crosshatched pattern, inspired by the timeless design of plaid fabric. This textured finish enhances visual depth and light reflection,

Material: Stainless Steel

Color: Gold, Black, Bronze, Copper, Sand Bronze Blue, Purple, Pink, and Green

Vibration

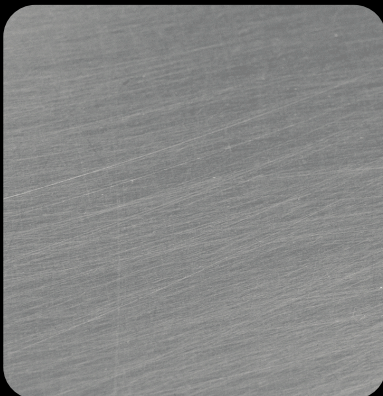


Short

A Vibration Metal Surface Finish features a distinctive textured pattern, inspired by the timeless design of plaid fabric. This textured finish enhances visual depth and light reflection,

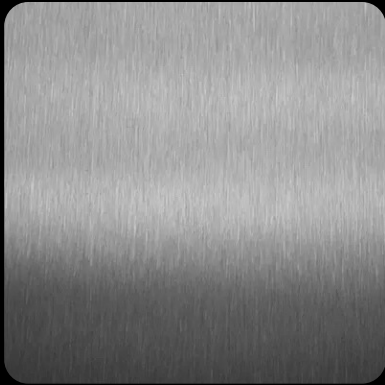
Material: Stainless Steel

Color: Gold, Black, Bronze, Copper, Sand Bronze Blue, Purple, Pink, and Green



Long

Brush/ Satin



A brushed, directional finish with fine, uniform grit lines—ideal for architectural and decorative applications.

Material: Stainless Steel

Color: Gold, Black, Bronze, Sand Bronze

Hairline



A smooth, continuous brushed finish with fine parallel lines—offering a sleek, modern look ideal for architectural and interior applications.

Material: Stainless Steel

Color: Gold, Black, Bronze, Sand Bronze

Mirror



A highly reflective, polished surface with a glass-like appearance—ideal for decorative, architectural, and high-end design applications.

Material: Stainless Steel

Color: Gold, Black, Bronze, Sand Bronze

Bead



A non-directional, matte surface created by bead blasting—offering a soft, textured appearance that reduces glare and hides fingerprints, ideal for both functional and decorative use.

Material: Stainless Steel

Color: Gold, Black, Bronze, Sand Bronze

Water Ripple

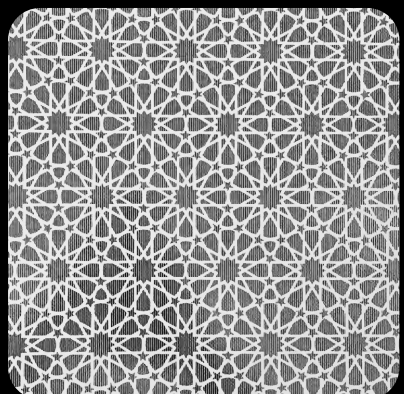


Our Water Ripple Stainless Steel Sheets are designed to mimic the elegant movement of flowing water, creating a dynamic visual experience through light refraction and mirror-like reflections.

Material: Stainless Steel

Color: Gold, Black, Bronze, Sand Bronze

Etching

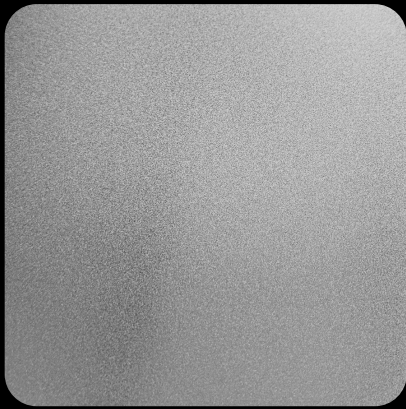


A decorative surface created through chemical or laser etching—offering custom designs, textures, or logos on stainless steel for unique architectural and interior accents.

Material: Stainless Steel

Color: Gold, Black, Bronze, Sand Bronze

Bead

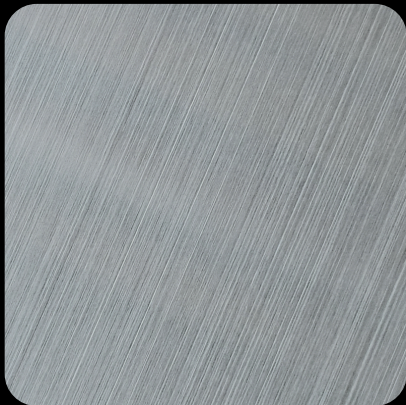


A non-directional, matte surface created by bead blasting—offering a soft, textured appearance that reduces glare and hides fingerprints, ideal for both functional and decorative use.

Material: Stainless Steel

Color: Gold, Black, Bronze, Sand Bronze

Desert Rain



The Desert Rain Finish by Foshan Hinox is a unique stainless steel treatment inspired by the beauty of desert rain, designed to evoke movement and calm.

Material: Stainless Steel

Color: Gold, Black, Scotch brite



FOSHAN HINOX

UAE | Oman | Qatar | Saudi Arabia | Canada | India

Call / WhatsApp: +91 99000 60990

**Address: #13/C, Bommasandra, Jigani Link Road Anekal Taluk,
Bangalore, Karnataka, India (560 099)**

Website: www.foshanhinox.com